

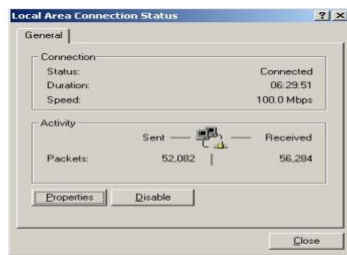
HOW TO SETUP RADIANT ADSL SERVICE

Windows 2000 Setup Guide



How to Setup Windows 2000 with Radiant ADSL

1. Double click on the MY COMPUTER icon on your desktop.
2. Double click on the CONTROL PANEL icon.
3. Double click on the NETWORK icon. This should bring up the Local Area Connection Status window.

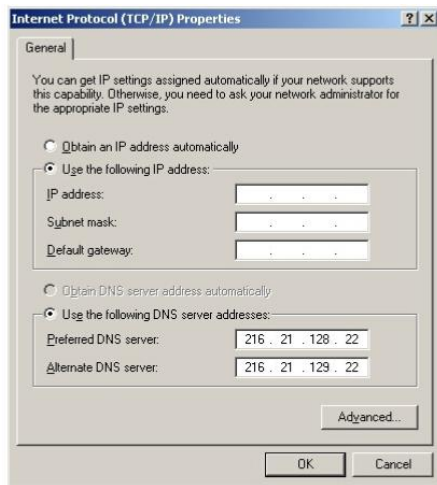


4. Click on the PROPERTIES button. This should bring up the *Local Area Connection Properties* window.



5. Click once on the words INTERNET PROTOCOL (TCP/IP) to highlight it and click on the PROPERTIES button. This should bring up the Internet Protocol (TCP/IP) Properties window. Be sure not to uncheck any of the boxes located beside an item. If you do, simply

click on the empty check box and a check mark will reappear.



6. Click on the USE THE FOLLOWING IP ADDRESS radial button.
7. Click on the box next to IP ADDRESS and enter in a unique IP Address provided on your cover letter.
8. Click on the box next to SUBNET MASK and enter in the Subnet Mask provided on your cover letter.
9. Click on the box next to DEFAULT GATEWAY, enter in the Gateway provided on your cover letter.
10. Click on the USE THE FOLLOWING DNS SERVER ADDRESSES radial button.
11. In the boxes next to PREFERRED DNS SERVER and ALTERNATE DNS SERVER, enter the DNS Server addresses provided to you on your cover letter.
12. Click on the OK button.